

By Order of Steve Henson & Adam Buck of Castle Hill Insolvency, Joint Administrator of The Marble Mosaic Company Limited

Stone Cutting, Metalworking, Woodworking & Factory Equipment, Forklifts, Yard Crane, Batching Plant, Trailers, Etc

(Subject to availability)



Please be aware that this is a PPE site – visitors must wear adequate PPE at all times

ONLINE AUCTION:

To bid please go to www.lshmachinerysales.co.uk or BidSpotter.co.uk
powered by atgmedia

AT:

The Marble Mosaic Company Limited, Winterstoke Road,
Weston-Super-Mare, BS23 3YE

ON VIEW:

Tuesday 28th January 2025, 10am to 4pm

BIDDING ENDS:

Wednesday 29th January 2025 at 3pm

CLEARANCE:

Monday 3rd to Friday 7th February 2025, 9am and 4pm

FURTHER INFO:

Adam Marx amarx@lsh.co.uk

BID ENQUIRIES:

MBA Accounts 023 8046 1643 aaaccounts@lsh.co.uk

OFFICE ADDRESS:

2nd Floor, 10 Victoria Street, Bristol, BS1 6BN



Sisu/ Kalmar Scercat TD2010M diesel triple mast forklift truck (1999)



CAT V180B diesel dual mast forklift truck



Daewoo D305-3 diesel dual mast forklift truck



JCB 531-70 telehandler (2010)



Dennison / SDC / Montracon tri-axle step frame trailer (2016 - 4off)



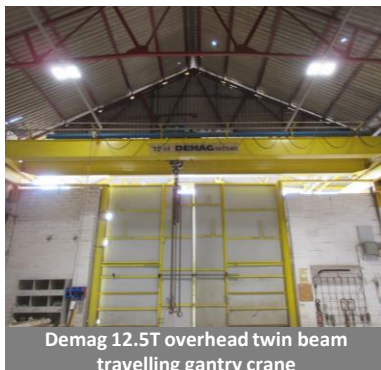
Montracon tri-axle flatbed trailer (2007 - 2off)



Pelloby 12.5 ton 50m span rail mounted portal yard crane (2019)



RHC 12.5 tonne overhead twin beam travelling gantry crane (2022)



Demag 12.5T overhead twin beam travelling gantry crane



Loadtite 2000kg overhead single beam travelling gantry crane



Concrete batching plant



Teka TP2 500 mixer (2017)



Achilli AFRA300ZM Stone Bridge Saw (2022)



Achilli ADR100 portable block bench saw (2023)



Red Band UK petrol stone saw, Model BSD45



Ferrari Dimas stone saw



Messersi F-400/E electric mixer mounted



Hoppers (3off)



Scaffolding





Altendorf F45 sliding table saw



Sedgewick TA450 table saw bench



Charnwood W590 planer/thicknesser,
12" x 9"



Wadkin Bursgreen crosscut saw



Wadkin Bursgreen 10AGS7313787
bench saw



Dust extractor system (Zoff)



La Roche bar bending machine (4off)



La Roche bar bending & cutting
machine (Zoff)



Levipress articulated arm polisher,
type FLP



Balding Engineering Beaver Mill
milling machine, MK2



Workbenches





Transport racks



Storage rack (43off)



AIS Seward Wyon 8.5 te 'C' hook,
model no. AIS1245



AIS Seward Wyon 8.5 te 'C' hook,
model no. 18302



Eichinger crane forklifts 1055.9T 2000kg
(2019)



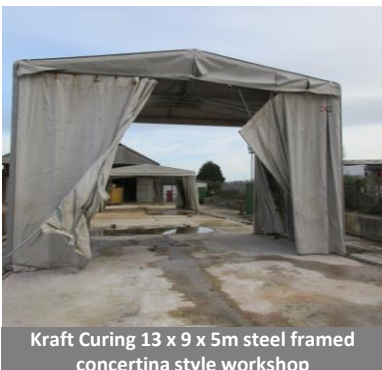
Contract forklift attachment lifting jib,
18,000kg (2023)



Spreader lifting beams



Seward Wyon 8.5 te SWL 'C' hook



Kraft Curing 13 x 9 x 5m steel framed
concertina style workshop



Kraft Curing 18 x 9 x 5m steel framed
concertina style workshop



Export type anti-vandal shipping
container



Lose aggregate and sand



Bricks



Coloured mortar



Concrete Blocks

Including:

Metalworking:

- **Achilli** ADR100 sawing machine (2023)
- **Achilli** AFRA300ZM sawing machine (2022)
- **La Roche** bar bending & cutting machines (2off)
- **La Roche** bar bending machines (3off)
- **Balding Engineering** milling machine
- **Clarke** metal worker bandsaw

Woodworking:

- **Altendorf** F45 sliding table saw
- **Sedgewick** TA450 radial table saw
- **Wadkin** Bursgreen circular saw bench
- **Wadkin** Bursgreen crosscut saw
- **Charnwood** W590 planer/thicknesser
- **Meber** SR-DS bandsaw
- **Draper** HD25/2CF pillar drill

Forklifts/Telehandler:

- **Sisu Scercut** TD2010M diesel forklift (1999) (ex-MOD)
- **JCB** 531-70 loaded/telehandler (2010)
- **Daewoo** D305-3 diesel forklift
- **CAT** DP45K diesel forklift
- **CAT** V180B diesel forklift

Concrete Batching Plant comprising:

- Product feed silos (6off)
- Backup product feed silos (8off)
- Conveyors
- **Messersi** F-400/E electric mixer
- **TEKA** TPZ 500 mixer (2017)
- **TEKA** BTB60 Skip hoist (2017)

Cranes/Lifting:

- **Pelloby** 12.5ton rail mounted yard crane (2019)
- **RHC** 12.5 tonne overhead gantry crane (2022)
- **Demag** 12.5T overhead gantry crane
- 'C' Hook lifting beams
- Lifting jibs

Building/Containers:

- **Kraft Curing** concertina style workshop canopy enclosure (2off)
- Anti vandal portable building
- Export type shipping container, 40ft (2off)
- Export type shipping container, 20ft (4off)
- Side opening shipping container

General:

- Air Industries air compressor
- Scaffold towers
- Petrol mobile pressure washer
- Assorted power & battery hand tools
- Diesel fuel tank
- 'A' storage racking
- Storage crates
- Consumable stock
- Rebar stock

Trailers:

- **SDC** Tri-Axle step frame trailer (2016)
- **Dennison** Tri-Axle step framed trailer (2016-2off)
- **Montracon** tri axle step frame trailer (2016)
- **Montracon** tri-axle trailer (2007-2off)



Export type shipping container, 8' x 20'
(5off)



Export type shipping container,
8' x 20' - 2 x folding side doors



Export type shipping container, 8' x
40', fitted out as drying room



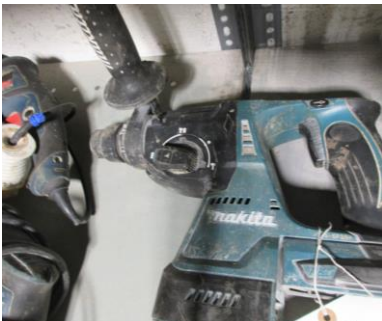
Drills



Polishers



Rebar benders and cutters



Cordless Tools



Sanders



Grinders



Impact Tools



Spit P370 Spitfire nail guns



Grinders



Industrial polishers



Hilti PS20 hand held concrete dry wall scanner



Hydrajaws fixing tester, model 2050



Laser Alignment LB-2, model 3950MC laser level



Sealey 220XTD mobile arc welder



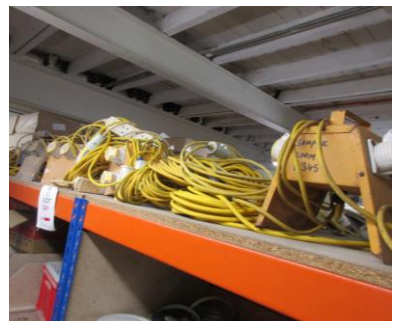
Green 3K 151HF inverter welder



Clarke shot blast cabinet, model CSB20B



Un-named petrol poker power unit



110v extension leads, splitter boxes



Consumable stock